

International Land Based Genset– WPG1375*7NG

Gen-set specifications	
Model	WPG1375B (C) 7NG
Prime Rating kVA/kWe	1375/1100
Continual Rating kVA/kWe	1375/1100
Voltage V	400/230
Frequency Hz	50
Power Factor	0.8(lagging)

No. of Phases	3
Sound@7m (dB(A))	Open: ≤96 dB (A); Silence: ≤85 dB (A)
Ambient temp (°C)	-10~40 (If <-10, oil and water heating; If >40, power correction)
Altitude(m)	≤1500
Fuel	Pipeline natural gas; MN≥85
Gas supply pressure(kPa)	Max.50 (Special pressure, contact with company)
Steady-state voltage deviation	±2.5%
Transient voltage deviation (100% sudden power decrease/increase)	+25% ~ -20%
Voltage steady time(s)	2
Steady-state frequency band	≤1.5%
Transient frequency deviation from rated frequency (100% sudden power decrease/increase)	±18%
Frequency steady time(s)	15

Standard Features

◆ ECU	◆ DC24 Electric starter	◆ DSE8610
◆ Closed water-cooled	◆ IP23	◆ H type insulation
◆ Air filter	◆ Muffler	◆ Circuit Breaker
◆ Starting batteries	◆ with connective wires	◆ Radiator

◆Oil Drain Valve	◆Forklift Groove	◆Shock Absorber
◆ Color	Weichai blue (B)/beige canopy and black chassis (L)	
◆ Packaging	Packing case(B)/Wrapping sheet(L)	

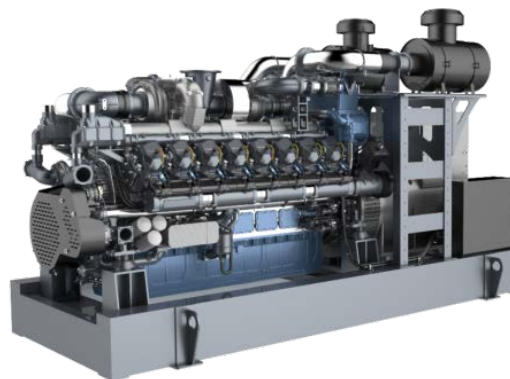
Options

◇Voltage380V/400V	◇Voltage 415V/440V	◇Voltage 6.3kV/10.5kV /13.8kV
◇Single Voltage 220V/230V/240V	◇Automatic Transfer Switch	◇Automatic Parallel system
◇Engine Heater (water)	◇Engine Heater (oil)	◇Alternator heater
◇PMG/AREP		

- Battery charging alternator
- 24 V DC batteries

Engine

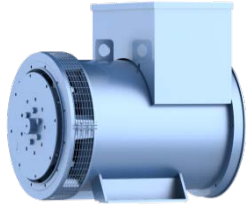
- Baudouin **16M33NG** series, 16 cylinder, in-line 4 stroke, radiator cooled engine
- Well-designed air handling system with
 - Replaceable paper element air cleaner with restriction indicator
 - Air to air after cooling
 - Optimized turbocharger for increased altitude capabilities
 - High efficiency, large heat area intercooler, reduce the air temperature after the intercooler
- First fill of lube oil and coolant
- NG gas regulator
- NG gas filter
- Standard integral set-mounted radiator system, designed and tested for 40°C ambient temperature
- Electrical starter motor with soft start engagement feature
- Intelligent fuel injection technology to start fast guarantee



Alternator

- Brushless type, Screen protected, Revolving field, Self-excited alternator conforming to IEC 60034-1
- Best in class efficiency
- Steel casing

- Compact design with sealed bearings for longer life and lesser maintenance
- IP23 standard protection level
- Impregnation on all wound components for better mechanical strength



- Back-lit LCD display
- 3 Phase generator and 3 Phase Mains monitoring
- Monitoring speed, frequency, voltage, current, oil pressure, coolant temperature
- Display warning, shutdown and engine status information
- Hours counter provides accurate information for monitoring and maintenance
-

The DSE8610 is an Auto parallel Control Module

Control



Engine specifications

Make	BAUDOUIN
Mode	16M33G6N0/5
Rated Speed r/min	1500
Prime Power kW	1280
Cooling	Close Liquid cooled
Governor	ECU
Aspiration	Turbocharged, Inter-cooled
No. of cylinders	16, in-line
Bore (mm) x Stroke (mm)	150x185
Displacement (L)	52.3
Starting system	24VDC Electrical
Total coolant capacity engine/tank (L)	130/NA
Radiator design temperature (°C)	40

Lubrication system capacity (L)	171		
Load rate (%)	100%	75%	50%
Fuel consumption (kg/h)	230.2	178.1	126.2
Engine high water heat quantity(kJ/s)	560.0	469.2	369.9
Engine high water flow(m ³ /h)	92.9	92.8	92.8
Engine high water inlet/outlet Tem. (°C)	85.1/91.3	86.3/91.5	86.8/90.9
Engine high water inlet/outlet Pre. (kPa)	-5.8/109	-5.9/110	-6.1/110
Exhaust gas heat quantity(kJ/s)	832.5	681.2	492.5
Exhaust gas flow (kg/h)	6264.0	4848.1	3339.2
Exhaust Temperature (°C)	459	475	502
Exhaust back pressure (mbar)	50		
Exhaust Temperature after recycle(°C)	Heating water 120/0.5Mpa steam 190/1MPa steam 220		

Alternator specifications

Make	LEROY-SOMER
Alternator Frame	LSA 50.2 L8
Exciter Type	Self-excitation
Enclosure	IP23
Voltage regulation	≤±1%
Class of Insulation	H
Winding Pitch	2/3

Rotor	Double bearing
-------	----------------

Remarks

Prime Rating (PRP) :

Prime power is defined as being the maximum power which a generating set is capable of delivering continuously while supplying a available electrical load when operated for an unlimited number of hours per year under the agreed operating conditions with the maintenance intervals and procedures being carried out as prescribed.

Continual Rating (COP):

These ratings are applicable for supplying continuous electrical power (at 100% load) in the event of a utility power failure. There is no limitation to the annual hours of operation under the agreed operating conditions with the maintenance intervals and procedures being carried out as prescribed.

Standard Reference Conditions

Standard operating environment: ambient temperature is -10°C~40°C, the altitude is less than 1000m,the relative humidity is less than 90%(25°C) and there is no dust\stand dust\salt fog\mold\condensation environment, etc.

Fuel consumption data at full load with diesel fuel with specific gravity of 0.726 kg/N m³ and low calorific value of 47.9 MJ/kg.

If the operating environment exceeds the above requirements, please contact with the factory.

Typical Genset Dimensions

Genset Model	Length A(mm)	Width B(mm)	Height C(mm)	Wet Weight (kg)	Note
WPG1375B7NG	6090	2300	2900	12300	
WPG1375C7NG	12192	2438	2896	19900	

Note: This size cannot be used for design, for design, please contact with company.

Open genset

Silence genset

